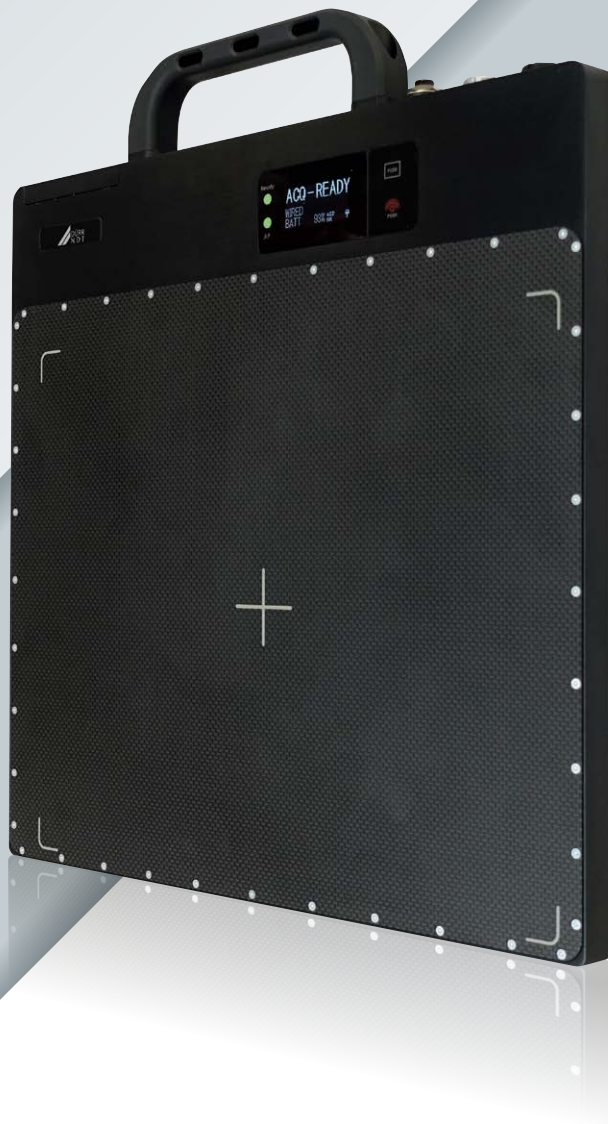


ROBUST & WIRELESS **DRC 2430 NDT**

HIGH-RESOLUTION FLAT PANEL DETECTOR



Digital Intelligence - Ready to Change.
www.duerr-ndt.com



Technical data

DRC 2430 NDT

Active area	233 x 291 mm (9.2 x 11.5")
Dimensions (H x W x D)	327 x 362 x 21.5 mm
Weight	3.2 kg (7 lbs)
Number of pixels	3072 x 3840
Exposure time	500 ms to 180 s
Image transfer time (wired/wireless)	2/4 s
Pixel pitch	76 µm
Scintillator	GOS
ADC	16-bit
Interface	Gigabit Ethernet, WLAN: 2.4 GHz (802.11abgn) / 5 GHz (802.11n, 2x2 MIMO)
Battery	Lithium-ion (7.4 V, 29.6 Wh)
Operating conditions	0 to 45°C (32 to 113°F), 30 to 85 % humidity
Protection level	IP67 (dust-tight and waterproof)
Housing	Aluminum frame, carbon-fiber entrance window (150 kg area load)
Software	DÜRR NDT D-Tect 9.8 or higher
Scope of supply	DDA, 2 battery packs, battery charger, Ethernet data cable

Important features

- ✓ High resolution 76 µm pixel pitch (6.5 lp/mm)
- ✓ Suitable for X-ray and gamma sources
- ✓ Extremely robust design with handle for easy portability
- ✓ Built-in wireless access point
- ✓ Connector for Gigabit Ethernet and power
- ✓ Dust-tight and waterproof
- ✓ 1 meter drop test pass

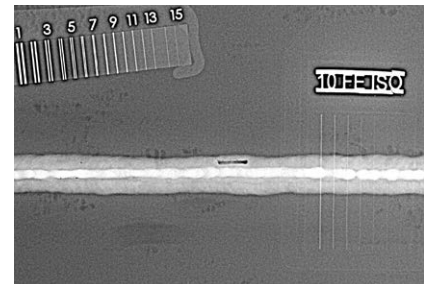


Waterproof and compact hard case for safe transportation. 10 kg (22 lbs) total weight including DDA and standard scope of supply.

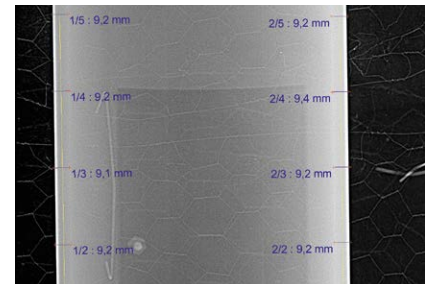


Two-bay charger, battery with status indicator.

Sample images



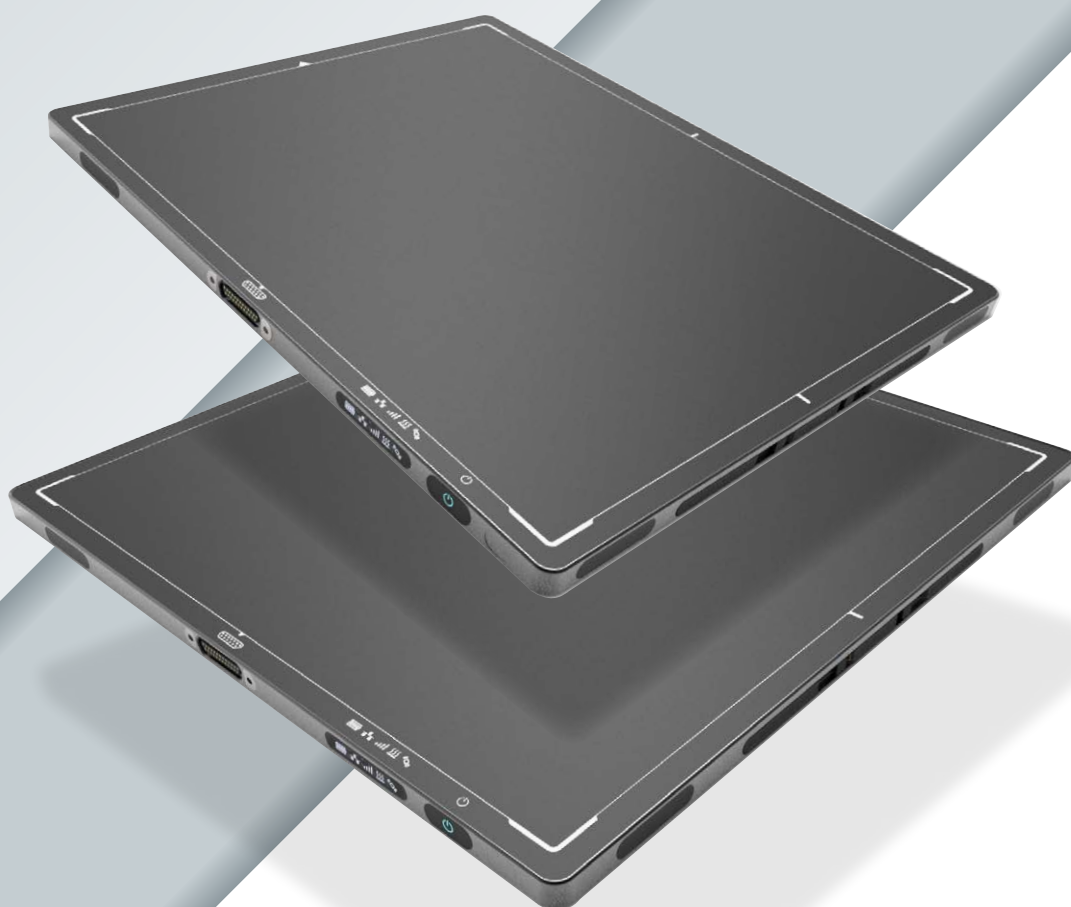
Weld seam, 10 mm steel plate, X-ray (ISO 17636-2 Class B compliant).



Profile image, DN 150 x 9 mm, Iridium-192.

LIGHTWEIGHT & WIRELESS **DRA 3543/4343 NDT**

HIGH-RESOLUTION FLAT PANEL DETECTORS



Digital Intelligence - Ready to Change.
www.duerr-ndt.com



Technical data

DRA 3543 NDT

DRA 4343 NDT (from 2019)

Active area	350 x 426 mm (14 x 17")	432 x 432 mm (17 x 17")
Dimensions (H x W x D)	384 x 460 x 15.5 mm	460 x 460 x 15.5 mm
Weight	3.2 kg (7 lbs)	3.8 kg (8.4 lbs)
Number of pixels	3524 x 4288	4288 x 4288
Image transfer time (wired/wireless)	0.5/3 s	0.6/3.6 s
Pixel pitch	100 µm	
Scintillator options	CsI, GOS	
ADC	16-bit	
On-board memory	1 GB DDR3, 8 GB SDHC card	
Interface	Gigabit Ethernet (TCP-IP), WLAN (802.11n @ 5 GHz)	
Battery	Lithium-ion (46.6 Wh), charging time 3h	
Operating conditions	10 to 35°C (50 to 95°F), 20 to 75 % humidity	
Housing	Aluminum frame, carbon-fiber entrance window	
Software	DÜRR NDT D-Tect 9.8 or higher	
Scope of supply	DDA, 2 battery packs, battery charger (accessories for stationary operation on request)	

Important features

- ✓ High resolution 100 µm pixel pitch (5.0 lp/mm)
- ✓ Suitable for X-ray and gamma sources
- ✓ Built-in wireless access point
- ✓ OLED display with Wi-Fi, LAN, battery, and sensor status indicators
- ✓ Docking connector for Gigabit Ethernet, power and data sync
- ✓ On-board pixel corrections and image storage



Status display



Docking connector



Two-bay battery charger