

**DR**

SYSTEMS

**INNOVATIVE  
TECHNOLOGIES IN  
INDUSTRIAL  
RADIOGRAPHY**



**Pipe Weld Inspection  
X-ray System  
XPRESS-SCAN®**

# XPRESS-SCAN®

## Pipe Weld Inspection X-ray System



### XPRESS-SCAN®

Mobile digital radiography system

XPRESS-SCAN® is used for single or double wall inspection of 300–1420 mm pipe welds in pipeline construction or repair.

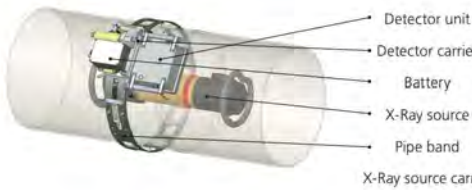
- No consumables, film processing or phosphor plates scanning
- No waste from film processing
- No darkroom
- Image quality class A or B acc.to ISO 17636-2
- Battery operated
- Wireless data transfer
- 3 minutes installation
- External storage under DICONDE protocol
- Compatible with any X-ray source and any crawler

### XPRESS-SCAN®

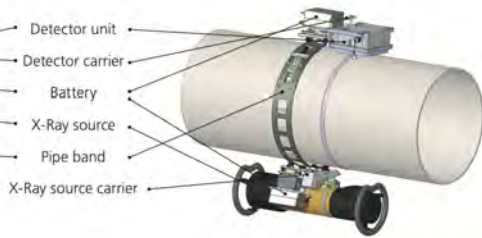
**Pipe Weld Inspection X-ray System provides:**

- Lower inspection costs by eliminating consumables (X-ray film and film processing chemicals), film processing equipment, and film storage facilities
- Online inspection results enable correction of welding settings to avoid more defects
- Perfect conditions for image examination (zoom, optimal contrast, image enhancement procedures) and inspection protocol preparation
- Easy to use database

LAYOUT XPRESS-SCAN®



LAYOUT XPRESS-SCAN® DW



# SYSTEM SPECIFICATIONS

	XPRESS-SCAN®	XPRESS-SCAN® DW
<b>Detector</b>	119 um pixel size Image size: 152 mm x 152 mm X-ray energy: up to 450 kVp Operating temperature: -20°C to +45°C	
<b>Productivity</b>	6 min/ weld	16 min/weld
	Pipe D=1420mm (21mm thick)	
<b>Image Storage Capacity</b>	200 datafiles (1420 mm weld)	
<b>Data Transfer</b>	Data transfer to the operator's laptop or tablet with Wi-Fi, up to 300 m. Data storage: internal memory of the detector; in case of Wi-Fi connection failure, the exposure continues, and the data is secured	
<b>Power Supply</b>	Power supply/charger: 110-220V AC Detector power supply: 5 Li-Ion batteries (UN 38.3 certified). Battery life 2 hours x 5 batteries = 10 hours X-Ray source carrier: the second set of 5 Li-Ion batteries	
<b>Dimensions and Weight</b> (transportation case)	860×560×360 mm, 52 kg	860×560×360 mm, 80 kg
	Titanium pipe band (1420 mm): 1000×130 mm, 7 kg	
<b>International Protection Code</b>	IP 67	

## DR-SOFT®

### Software for industrial digital radiography:

- Real-time X-ray image acquisition
- Exposure control, image processing and archiving
- X-ray image storage in DICOM data format (ASTM E2339-11)
- Data protection from tampering
- Compatibility with conventional image formats (tiff16, bmp, jpg)
- Image enhancement
- Inspection date, time and GPS coordinates are filed
- Single image built for the whole weld length



### Scope of Delivery

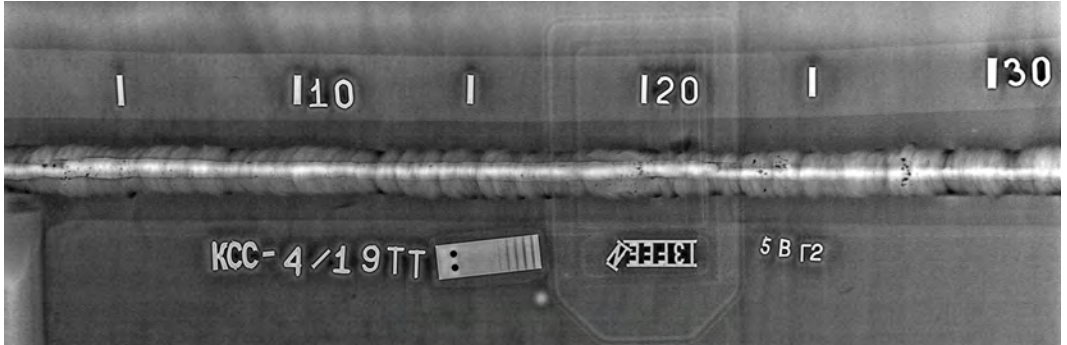
- Detector with carrier
- External battery, 5 or 10 units
- Transportation case with battery charger & WiFi access point
- Magnet-mounted WiFi antenna
- Tablet PC with DR-SOFT®
- Titanium pipe band for a given pipe diameter (12"...56" on request)
- X-Ray source's carrier (for XPRESS-SCAN® DW)
- Accessories kit



# DR

SYSTEMS

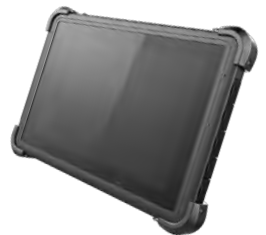
## Pipe Weld Inspection X-ray System **XPRESS- SCAN®**



**DR**  
SYSTEMS

**DR-SYSTEMS LLC**  
INNOVATIVE TECHNOLOGIES IN  
INDUSTRIAL RADIOGRAPHY

[WWW.DR-SYSTEMS.COM](http://WWW.DR-SYSTEMS.COM)



## **XPRESS- SCAN®**